

**GF4 COMPONENTS**



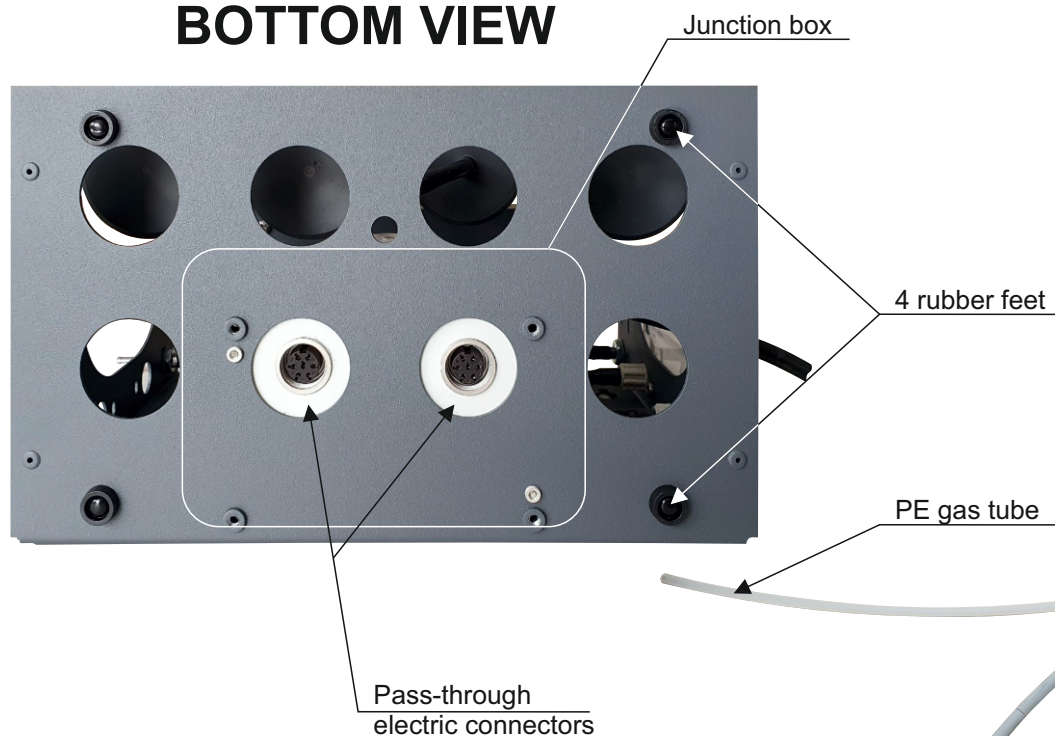
**LEFT SIDE VIEW**

**FRONT VIEW**

**RIGHT SIDE VIEW**



## BOTTOM VIEW



### Junction box

Junction box with two electric connectors:

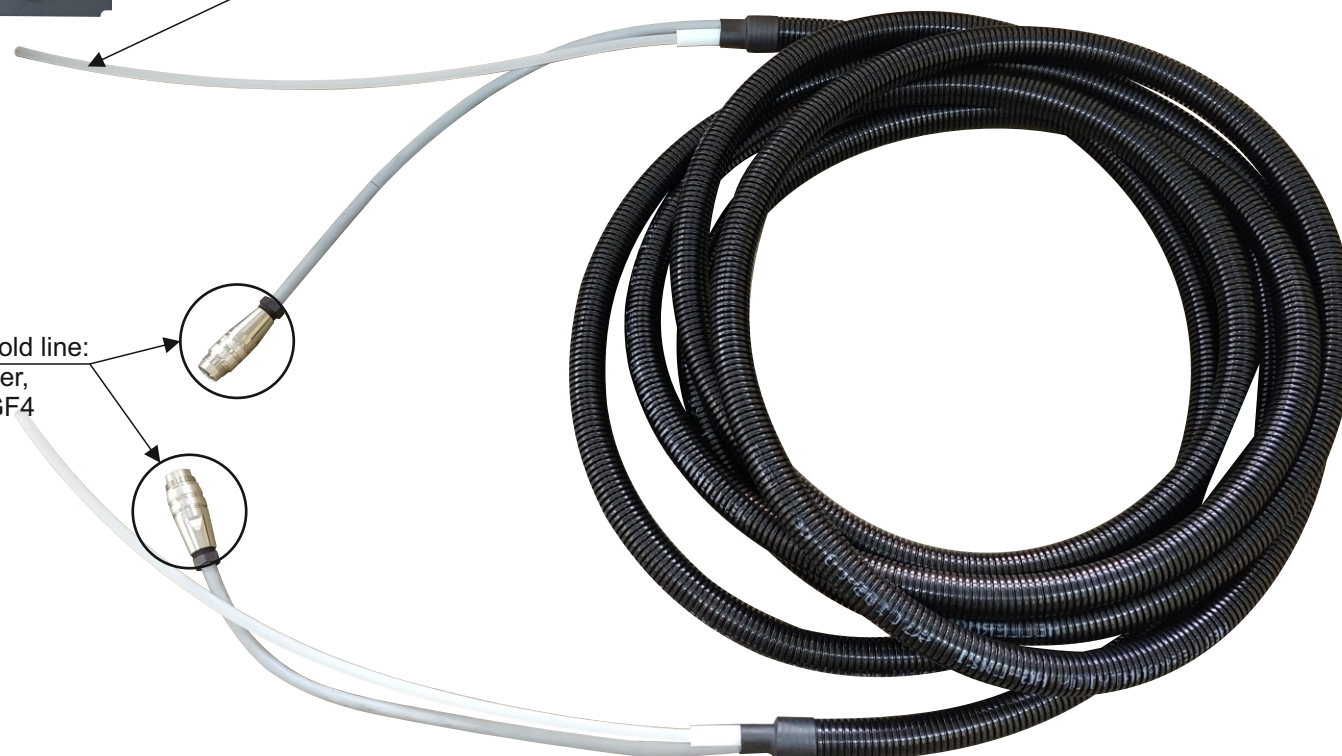
- provides supply to GF4's peristaltic pump
- transmits electrical signals between the analyser and its peripherals

Connectors are interchangeable and it does not matter where each connector is plugged in.

In the portable version of GF4, the junction box is mounted vertically, with the connectors accessible from the back

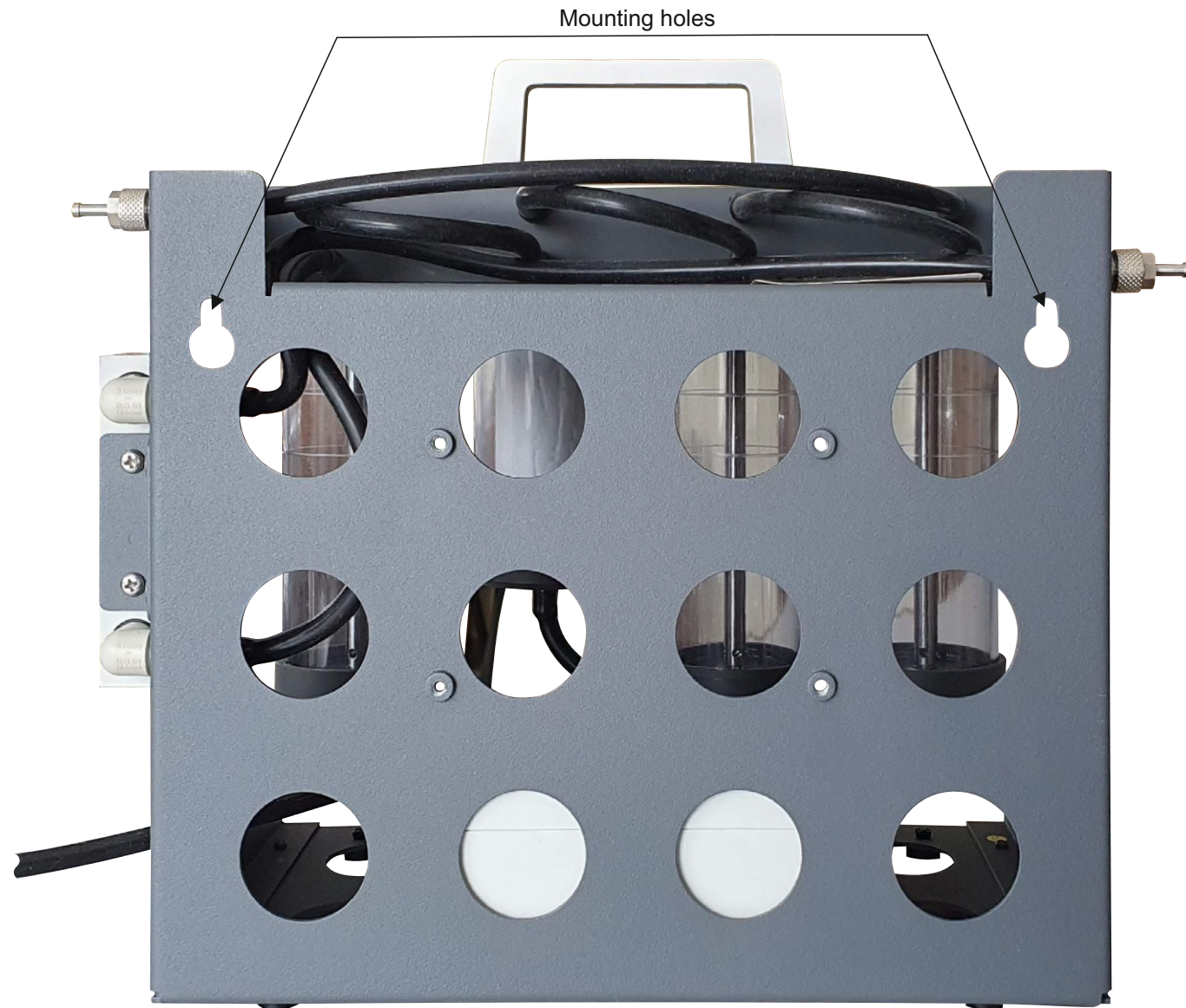
## COLD LINE GAS-ELECTRIC CONNECTION

Electric plugs of the cold line:  
one end to the analyser,  
the other one to the GF4





**BACK VIEW**

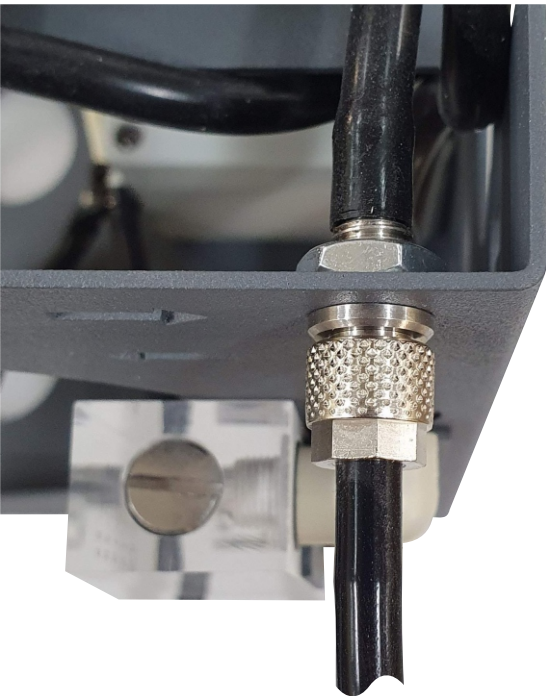


**DUAL GAS PORT**

**ACCEPTS PE / PVDF 4x6mm TUBE**  
(fitting with locking nut)



**ACCEPTS SILICON / FKM 3x5mm TUBE**  
(fitting on the barb)



Secure nut  
to fix stiff tubes

Barb to fix  
soft tubes





## REMOVEABLE CONTAINERS

Each of the four containers of the GF4 can be removed to provide better access for maintenance  
- to refill water / activated carbon or to replace the filter inlet.

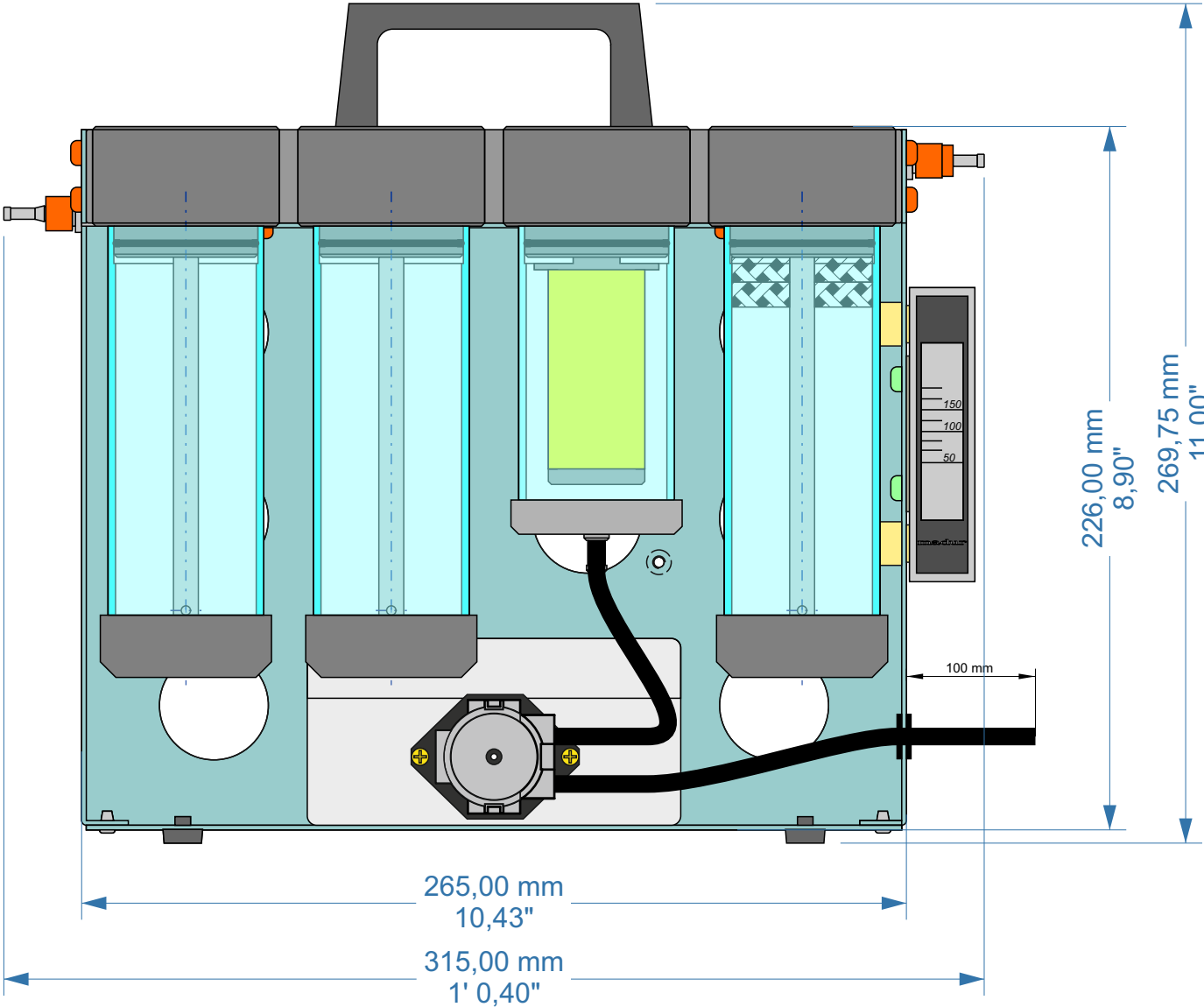
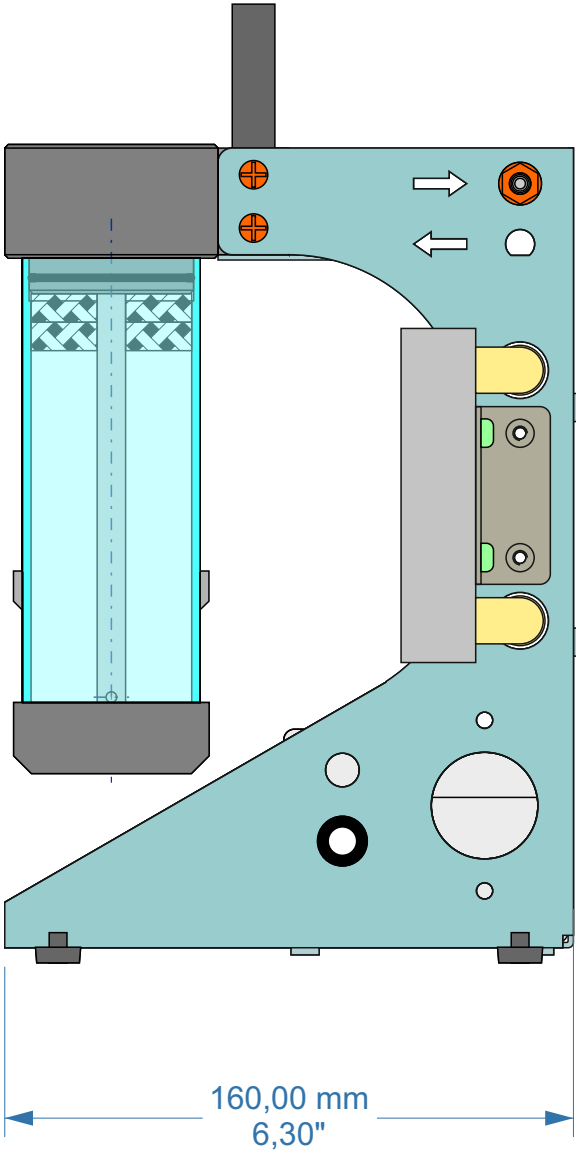
To detach the container pull it firmly away from the GF4.



**GF-4**scrubber

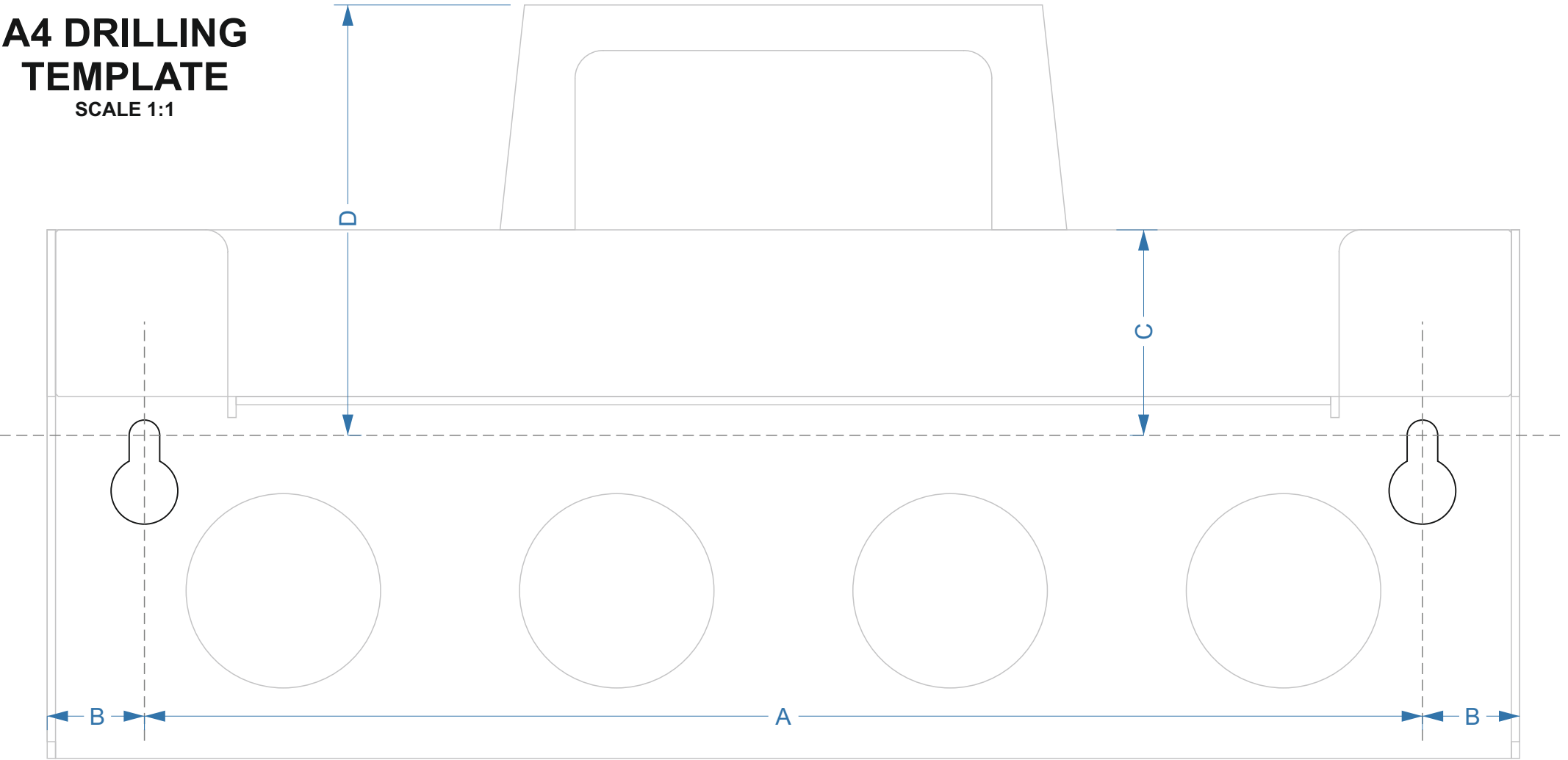
madur

**WEIGHT :**  
2,5kg (5,5lb)



A4 DRILLING  
TEMPLATE

SCALE 1:1

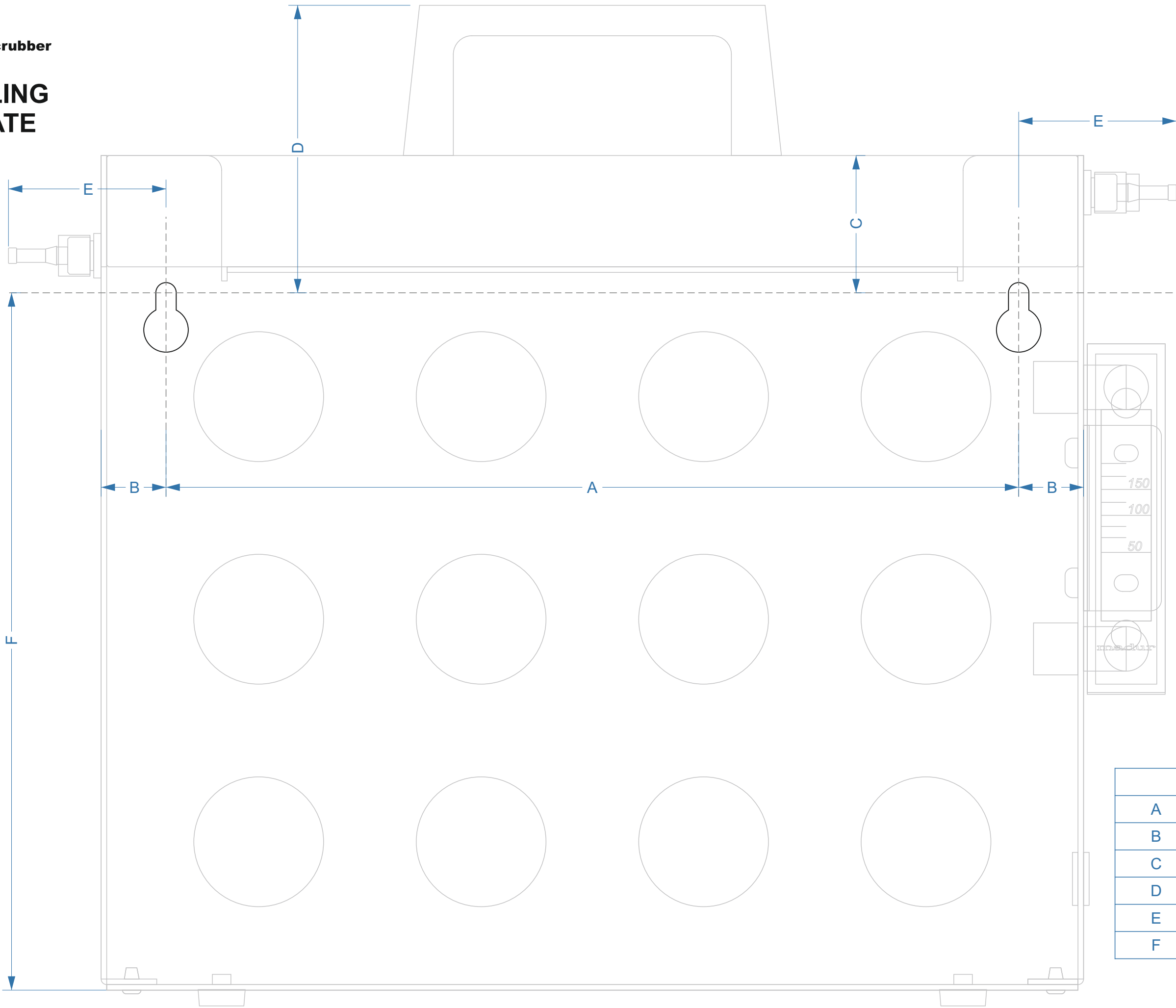


	mm	in
A	230,0	9,06
B	17,5	0,69
C	37,0	1,46
D	77,5	3,05



A3 DRILLING  
TEMPLATE

SCALE 1:1



	mm	in
A	230,0	9,06
B	17,5	0,69
C	37,0	1,46
D	77,5	3,05
E	42,5	1,67
F	188,0	7,40